

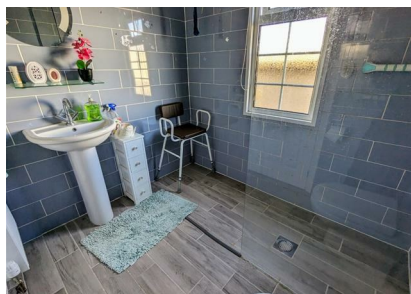


The Firs, Rushbrooke Lane, Bury St. Edmunds, IP33 2SY

Rent - £210,000 Deposit -

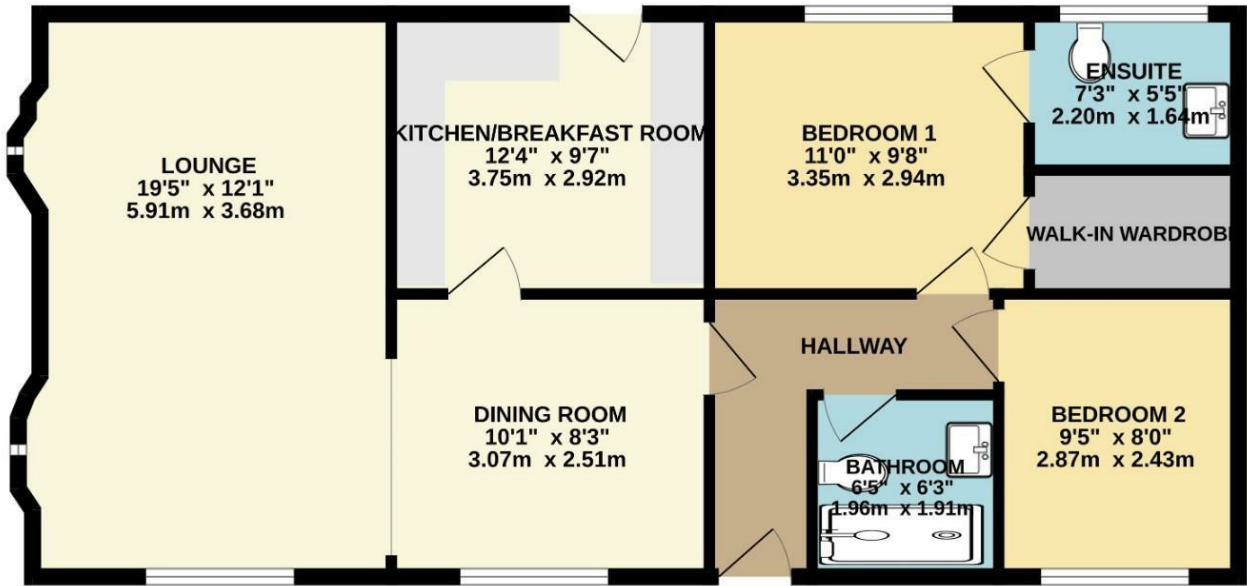
Shires Residential sales are delighted to offer to the market this modern, two bedroom park home on the popular park home site 'The Firs' for the over 50's on Rushbrooke Lane in Bury St Edmunds. The home offers two double bedrooms with en-suite to bedroom one, modern kitchen, spacious open plan kitchen diner and modern wet room. The property has been updated throughout including new insulation and new brackets beneath. Externally the property boasts a low maintenance rear garden with attractive views, large garage and driveway with off road parking for multiple vehicles.

- POPULAR PARK HOME SITE FOR THE OVER 50'S
- MODERN THROUGHOUT
- EN-SUITE TO BEDROOM ONE
- NEWLY FITTED INSULATION
- PARKING
- CLOSE TO BURY TOWN CENTRE
- TWO DOUBLE BEDROOMS
- OPEN PLAN LIVING ROOM/DINER
- GARAGE



Council Tax Band: A - EPC Rating: null

GROUND FLOOR



Whilst every attempt has been made to ensure the accuracy of the floorplan contained here, measurements of doors, windows, rooms and any other items are approximate and no responsibility is taken for any error, omission or mis-statement. This plan is for illustrative purposes only and should be used as such by any prospective purchaser. The services, systems and appliances shown have not been tested and no guarantee as to their operability or efficiency can be given.
Made with Metropix ©2024

